



60mJ Laser Rangefinder Target Designator

Model:LDR60K2

PRODUCT DESCRIPTION

This laser rangefinder target designator adopts a unique light source design, achieving up to 60mJ laser output with a pulse width greater than 10ns, all within a very compact size. The initial laser divergence angle is 50% smaller than that of conventional products. The emitter uses a combined aperture design for both emission and reception, which makes the structure compact and suitable for applications such as optoelectronic pods and vehicle-mounted ranging systems.

Main functions of the emitter:

- Target illumination guidance
- Target distance measurement
- Encoded laser output
- Overvoltage, overcurrent, and over-temperature protection, with reverse polarity protection for the power supply

- Differential signal external trigger function



TECHNICAL SPECIFICATIONS

Main Parameters of Laser Light Sources

Laser Wavelength	1064nm±1nm
Pumping Method	Semiconductor pumping
Repetition Rate	1~20Hz
Output Energy	≥60mj@20Hz
Irradiation Distance	≥6km
Pulse Width	10ns~20ns
Beam Divergence Angle	≤0.3mrad
Optical Axis Stability	<0.1mrad
Pulse Energy Stability	<5%(RMS,within one irradiation cycle)
Operating Time@20Hz	Work for 1 minute,rest for 0.5 minute;after 8 cycles,rest for 15 minutes before continuing to work.
Power Supply	DC 28V±4V
Power	Standby power consumption≤20W;Peak power consumption≤120W
Encoding Type	Built-in precise frequency encoding, variable interval code, supports pseudo-random encoding
Encoding Accuracy	≤1.5μs@20Hz

Range Measurement System Specifications

Ranging Mode	Pulse ranging
Ranging Frequency	1~10Hz
Maximum Measurement Distance	> 10Km (3m × 3m target board, visibility > 23km, target reflectivity > 20%)
Minimum Measurement Distance	≤500m
Ranging Accuracy	±5m
Measurement Success Aate	≥98%

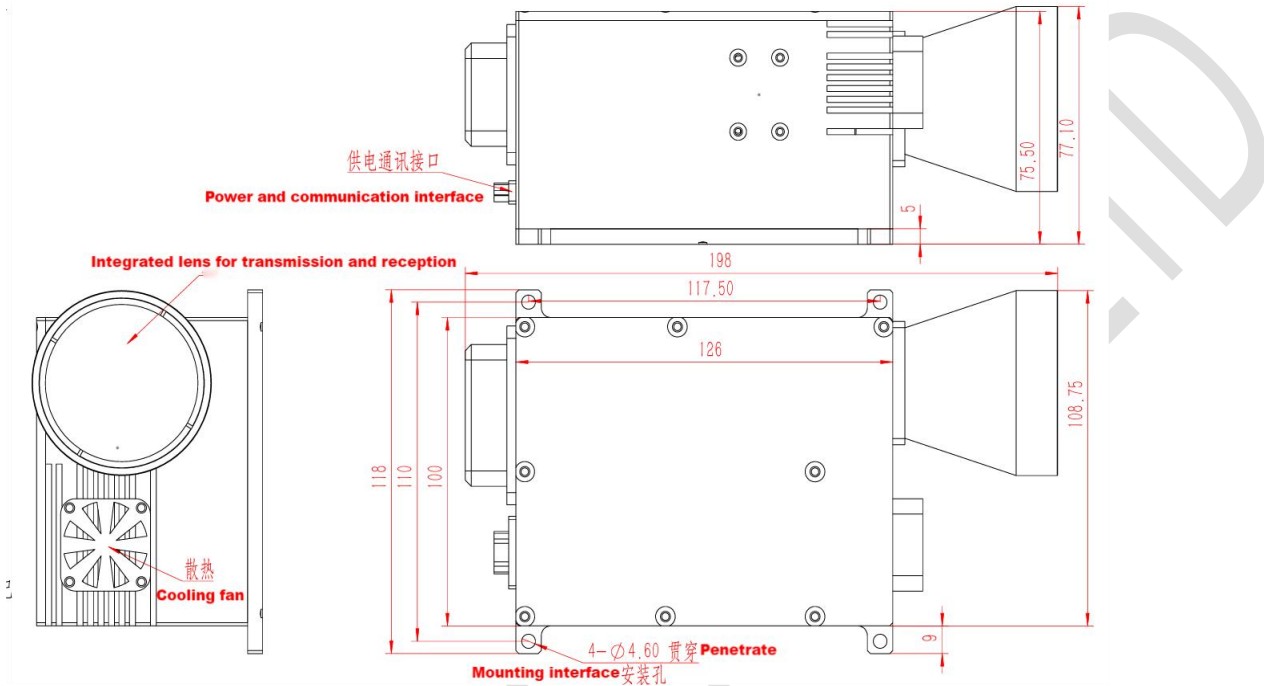
Interfaces And Structure

Serial Port	RS422 serial port, external synchronization input at 422 level, 0-5V external synchronization irradiation
-------------	---



Product Dimensions	≤198X109X75.5mm
Weight	≤1400g
Cooling Method	Air cooling
Environmental Adaptability	
Operating Temperature	-40°C~+60°C
Storage Temperature	-50°C~+75°C
Vibration	Meets the frequency range and power density requirements specified in MIL-STD-810G (frequency 5Hz to 500Hz, duration 12 minutes)
Shock	Meets the functional shock requirements of MIL-STD-810G

STRUCTURAL DRAWING (mm)



ELECTRICAL INTERFACE

1. The electrical connection mode is connector J30J-21ZKP and J30J-04ZK, and the cable is defined as follows:

Table 1 J30J-21ZKP interface definition

J30J-21ZKP				
PIN	Identification	Instructions	Direction of signal	Others
1	TX+	RS422 sending end +	Output	RS422 communication interface
2	TX-	RS422 sending end -	Output	
3	RX+	RS422 receiving end +	Input	
4	RX-	RS422 receiving end -	Input	
5	GND	RS422 reference ground	GND	
6	EN+	Power supply enable end		24V power supply enable switch
7	EN-	Power supply enable end		
8-13		Not used		
14	A	External trigger differential signal + (A)	Input	A, B are the A and B ends of differential chip (RS422 differential)
15	B	External trigger differential signal - (B)	Input	



16-21		Not used		
-------	--	----------	--	--

Table 2 J30J-04ZK wiring definition

J30J-04ZK				
PIN	Identification	Instructions	Direction of signal	Others
A、 B	24V	power supply	Input	Red.
C、 D	GND	power reference point	GND	Black.

2. Power interface: +24VDC±10%;
3. External trigger level: RS422 differential level;
4. Cooling mode: cooling fan on the top of the shell;

INTRODUCTION TO POWER-ON AND OPERATION

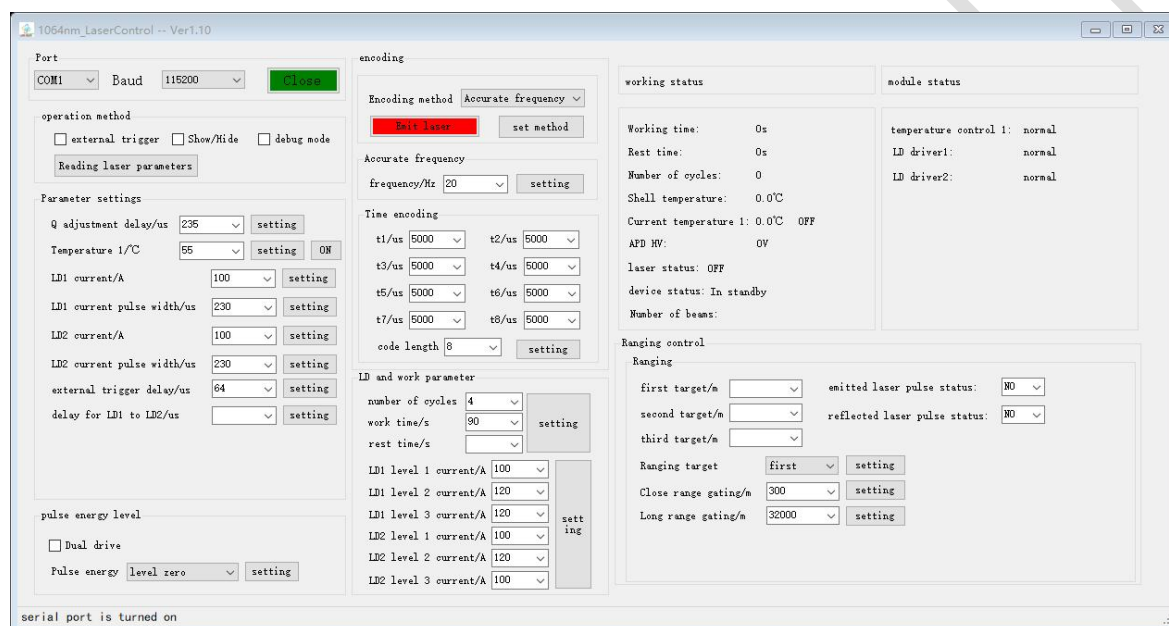


Figure Laser Ranging Target Designator upper computer

Operation steps

- Use USB to RS422 serial line to connect PC and laser.
- Open the laser host computer and open the serial port.
- Connect the laser power line and turn on the power supply.
- Turn on the external enable switch of the laser and power on the laser.
- Check the status and current temperature of the laser through the host computer, and start the temperature control (the red box button below).

Note: Before starting the laser, it is necessary to start the temperature control first and wait for the temperature to reach the set value.



Parameter settings

Q adjustment delay/us 235

Temperature 1/°C 55

LD1 current/A 100

LD1 current pulse width/us 230

LD2 current/A 100

LD2 current pulse width/us 230

external trigger delay/us 64

delay for LD1 to LD2/us

- After starting the temperature control, wait for the temperature to reach the set temperature (the default value is 55°C, do not change it at will). The red box is the real-time temperature of the temperature control.

Working time: 0s

Rest time: 0s

Number of cycles: 0

Shell temperature: 0.0°C

Current temperature 1: 0.0°C OFF

APD HV: 0V

laser status: OFF

device status: In standby

Number of beams:

- After the temperature is reached, click the "Emit laser" button to launch the laser.

Encoding method Accurate frequency

- After working, please turn off the power

Parameters Description

- As shown in Figure 4.1, the host computer interface includes laser irradiator parameter setting and data display. Laser triggering mode (internal triggering, external triggering), encoding mode (precise frequency, time encoding), working time, driving current, etc. can be set.
- Debug mode:** no limitation on the working time of laser light emission

debug mode

- Trigger mode:** "external trigger" means the use of external differential signal to trigger the laser, the light pulse frequency follows the frequency of the external signal. "internal trigger" means the trigger signal is generated by the information processing board.

external trigger

- Q-switching delay:** the delay between Q-switching signal and LD drive signal, whose value and LD drive pulse width affect the laser energy. Generally, when the LD drive pulse width is 230us, Q-switching delay is 235us.

Q adjustment delay/us 235

- LD drive current:** the change of drive current will cause the change of laser output energy. The larger the current, the larger the output energy. Generally, the LD drive current does not exceed 120A. To change the LD drive current, the value of the current



needs to be set first, and then click the laser gear position 0, and the current binding is completed.

Q adjustment delay/us	235	setting
Temperature 1/°C	55	setting ON
LD1 current/A	100	1 setting
LD1 current pulse width/us	230	setting
LD2 current/A	100	setting
LD2 current pulse width/us	230	setting
external trigger delay/us	64	setting
delay for LD1 to LD2/us		setting

pulse energy level

Dual drive

Pulse energy level zero setting 2

Ranging target	first	setting
Close range gating/m	300	setting
Long range gating/m	32000	setting

- **LD drive pulse width:** signal pulse width, generally 230us. This value is the default, remain unchanged.
- 100mJ laser ranging target designator only single driver, the LD2 parameter setting is invalid.
- The working time indicates the laser light time, when the light time reaches the set value, the laser stops output, the laser ranging target designator starts to enter the rest state, after the completion of the rest automatically light, laser ranging target designator light 1 times increase 1 times the cycle, when the cycle times reach the set number of cycle times, no longer cycle light.
- The range finding part of the parameters only range finder, the closest range gating and the furthest range gating these three parameters.

BUILT-IN CODING DEFINITIONS

Precise frequency

The pulse frequency of light emission. For example, if the frequency is set (bound) to 20Hz, the light emission frequency of the laser is 20Hz.

Time coding

Time coding consists of 8 time values and code length. The time value refers to the interval time between two successive laser emission. For example, the 8 time values are 40ms, 43ms, 46ms, 49ms, 50ms, 53ms, 56ms and 60ms respectively. If the code length is 3, the first 3 time values are taken to participate in the laser emission cycle, that is, the first and second laser interval is 40ms, the second and third laser interval is 43ms, the third and fourth laser interval is 46ms, and the laser interval time repeats the three time interval values. If the code length is 5, the laser interval time repeats the first five time intervals.

COMMUNICATION PROTOCOL

1. Physical layer

Interface standard: RS422

baud rate: 115200bps, 8 bits data bit, 1 bit stop bit, no check bit.



Communication format: (case insensitive)

2. Message

that is, sent by the host computer (such as computer) corresponding message.

3. Message Format

The structure of the message is as follows:

Header	command word	Data length	Data	Checksum
2 bytes	1 byte	2 bytes	N bytes	2 bytes

- **Header:** When the message is sent from the upper computer to the lower computer, the first byte is 0xAA, and the second byte is 0xBB, which is fixed. When the message is sent from the lower computer to the upper computer, the first byte is 0xAA, and the second byte is 0xBB, which is fixed.
- **Command word:** 1 byte, see below.
- **Data length:** The number of bytes of data to be sent, excluding the number of bytes itself.
- **Data:** The actual data to be sent. If it is 16-bit data, it is decomposed into two bytes, with the high byte in front and the low byte after.
- **Checksum:** Add all data bytes (8 bits, excluding header, command word and data length), take the lowest 16 bits, and then decompose them into two bytes, with the high byte in front and the low byte after. If there is no data byte, the two bytes of the checksum are 0x00.

4. Command words

Command word	Define	Byte	Data	clarification
0x00	Read irradiator parameter information	0	No data bytes	
0x01	Standby			
0x02	Set trigger mode	1	0x00: Internal Trigger 0x01: External Trigger	Default internal trigger External trigger mode, light output delay can be set, i.e., the rising edge of the external trigger signal to the laser output time, default 304us±1us
0x03	Set Q-switching delay	2	Delay value	1LSB=1us Range:0-300us Default value: 0us
0x04	Standby (originally set working time)			
0x05	Set working mode	1	0x00: Debug mode 0x01: Timing mode	Default timing mode
0x06	Set temperature of thermostat 1	2	S16 Temperature Value	1LSB=0.1°C Range:0-65°C Default value: 25°C
0x07	Start/stop thermostat 1	1	0x00: Stop 0x01: Start	Default startup upon power-on
0x08	Standby			
0x09	Standby			
0x0A	Set driver 1 current	1	Current value	1LSB=1A Range:0-150A Default value: 150A
0x0B	Set laser power shift	1	0x00: Gear 0 0x01: Gear 1 0x02: Gear 2 0x03: Gear 3	Working according to the current pulse width set by the parameter in gear 0 Fixed current of driver 1 and driver 2 according to the relevant gear set Laser appears
0x0C	Set driver 1 pulse width	2	pulse width value	1LSB=1us Range: 0-250us Default value: 180us
0x0D	Set driver 2 current	1	Current value	1LSB=1A



				Range:0-150A Default value: 150A
0x0E	Standby			
0x0F	Set driver 2 pulse width	2	Pulse Width Value	1LSB=1us Range:0-250us Default value: 180us
0x10	Standby			
0x11	Start/stop laser	1	0x00: Stop 0x01: Start	Laser Start/Stop 1. Start/Stop Frequency Signal 2. Start/Stop Driver 1 and Driver 2
0x12	binding light frequency	1	Frequency value	1LSB=1Hz Range:1-30Hz Default value: 20Hz
0x13	binding time code	17	Code length + Time value 1 Time value 2 Time value 3 ... Time value 8	Length: 8bit, number of time values 1LSB=1us Range:40000-60000us The default value of 8 time values is 50ms. One time value is 16 bits (high byte in front, low byte in the back).
0x14	standby			
0x15	set coding mode	1	0x01: Precision frequency 0x02: Time coding 0x03: NA	
0x16	set manual high pressure value	2	0-500V, 1V step	Invalid when automatic high-voltage control is started
0x17	close range gating	2	Close range gantry in m	Minimum 100m
0x18	long range gating value	2	Far range gantry in m	Maximum 50000m
0x19	set external trigger light delay	2	Voltage value	1LSB=1us Range: 0-600us Default value: 50us
0x1A	standby			
0x1B	set automatic high pressure control	1	00: Manual high pressure 01: Start automatic high pressure	
0x1C	rangefinder set target	1	0x01: Single target 0x02: First and last target 0x03: Three target	
0x1D	set gain voltage	2	Voltage value	1LSB=1mV Range:0-5000mV
0x1E	cycle working parameter setting	3	Loop times 1 byte Working time 1 byte NA Standby	Loop times: 0--100 Working time: 0-255 seconds
0x1f	Set 3 levels of energy current	6	0-150A, step 1A AA 1 speed AA 2-speed AA 3-speed DD 1-speed DD 2-speed DD 3-speed	The currents of the first, second, and third stages of driver 1 and the first, second, and third stages of driver 2 are shown in turn.
0x20	Select single drive, 2 drives	2	1: Single-drive AA 2: Dual-drive AA DD	
0x21	Trigger delay from drive 1 to drive 2	2	0-30us, 1us step	
0x22	MCU program serial port update	0		After sending this command, the MUC reboots and enters firmware update mode.



5. Introduction to Reply Packet

● Irradiator Parameter Packet

This packet is obtained by the upper computer sending the command (0x00) to read the irradiator parameter information.

Command word	Element	Instructions
0	0xAA	Information header
1	0xBB	
2	0x00	command word
3	0x00	Data length: 51
4	0x33	
5	Trigger Mode	0x00: Internal Trigger 0x01: External Trigger
6	Q-switching Delay	1LSB=1us
7	Working Time Setting Value	1LSB=1s
8	Cycle Number Setting Value	
9	Working Mode	0x00: Debug mode 0x01: Timing mode
10	Temperature Setting Value of Temperature Control 1	S16,1LSB=0.1°C
11		
12	Temperature Setting Value of Temperature Control 2	Alternate (00), not resolved at this time
13		
14	Driver 1 Current Setting Value	1LSB=1A
15	Driver 1 Pulse Width Setting Value	1LSB=1us
16	Driver 2 Current Setting Value	1LSB=1A
17	Driver 2 Pulse Width Setting Value	1LSB=1us
18	Emitting Frequency Setting Value	1LSB=1Hz
19	Time Code Length	
20	Time Code 1	1LSB=1us
21		
22	Time Code 2	1LSB=1us
23		
24	Time Code 3	1LSB=1us
25		
26	Time Code 4	1LSB=1us
27		
28	Time Code 5	1LSB=1us
29		
30	Time Code 6	1LSB=1us
31		
32	Time Code 7	1LSB=1us
33		
34	Time Code 8	1LSB=1us
35		
36	Coding method	0x01: Precision Frequency 0x02: Time code 0x03: Alternate (00)
37	Laser signal delay (external trigger delay) occurs.	1LSB=1us Range:50-300us
38		
39	APD high voltage setting value, the actual value of	1LSB=1V
40		
41	Close proximity gating value	1LSB=1m
42		
43	Long-range switching value	1LSB=1m
44		



45	Automatic high pressure control	0x00:Stop 0x01:Start
46	LD1 1st-mode current	1LSB=1A
47	LD1 2nd-mode current	
48	LD1 2nd-mode current	
49	LD2 1st-mode current	
50	LD2 2nd-mode current	
51	LD2 2nd-mode current	
52	Energy-mode selection	00~03
53	Single/Dual drive flag	1: Single drive 2: Dual drive
54	Automatic/manual high-voltage signals	0: Manual high pressure 1: Automatic high pressure
55	Target Indicator	0x01:Single target 0x02:First and last target 0x03:Triple target
56	Checksum high byte	
57	Checksum low byte	

● **Laser ranging target designer status message**

This message is obtained by automatically sending it from the lower unit at a frequency of 1 Hz.

Command word	Element	Instructions
0	0xAA	Message header
1	0xBB	
2	0x01	Command word
3	0x00	Data length: 22
4	0x16	
5	Lighted Time/Operating Time	1LSB=1s
6		
7	Rested time/stop time	1LSB=1s
8		
9	Number of light out cycles	
10	Shell temperature	S16,1LSB=0.1°C
11		
12	Temperature control 1 current temperature	S16,1LSB=0.1°C
13		
14	Temperature control 2 current temperature	S16,1LSB=0.1°C
15		
16	Temperature control 1 state	0x00: Stop 0x01: Start
17	Temperature control 2 status	0x00: Stop 0x01: Start
18	Laser Status	0x00: Stop 0x01: Start
19	Laser Status	0x01:Standby... 0x02:Out of light... 0x03:Resting... 0x04:Malfunctioning...
20	Number of pulses	Number of pulses emitted for this power-up
21		
22		
23		
24	Fault Code	bit0: 0:Temperature 1 fault 1:Normal bit1: 0:Temperature 1 overcurrent fault 1:Normal bit2: 0:Temperature 2 fault 1:Normal



		bit3: 0:Temperature 2 overcurrent fault 1:Normal bit4: 0:LD1 overcurrent fault 1:Normal bit5: 0:LD1 charging voltage overvoltage fault 1:Normal bit6: 0:LD2 overcurrent fault 1:normal bit7: 0:LD2 charging voltage overvoltage fault 1:normal
25	Main wave state	0x00:No 0x01:Yes
26	Echo Status	0x00:No 0x01:Yes
27	Checksum High Byte	
28	Checksum Low Byte	

● **Return distance data**

This message returns distance data, uploaded at the frequency (consistent with the ranging frequency)

Command word	Element	Instructions
1	0xAA	Header
2	0xBB	
3	0x02	Command word
4	0x00	Data length:9
5	0x09	
6	Objective 1	
7		
8		
9	Goal 2	Uint:0.1m 1LSB=0.1m
10		
11		
12	Target 3	Uint:0.1m 1LSB=0.1m
13		
14		
15	Checksum High Byte	
16	Checksum low byte	